

# WDO 93F B K

12NC: 859991532660

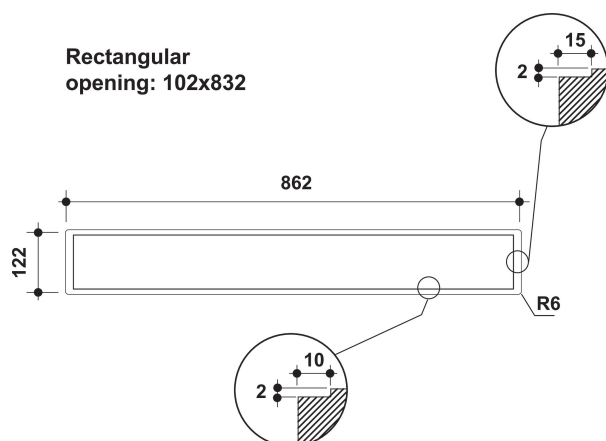
GTIN (EAN) code: 8003437209512

Whirlpool

SENSING THE DIFFERENCE



Rectangular opening: 102x832



## MAIN FEATURES

Product group	SPORÁKOVÉ ODSAVAČE
Colour body	Černá
Material body	Stainless steel
Colour chimney	N/A
Material chimney	N/A
Typology	Downdraft
Installation type	Table top
Type of control	Electronic
Type of control settings	Touch-control
Decor panel options	Not possible
Motor location	Integrated motor in hood body
Operating Mode	Convertible
Electrical connection rating (W)	110
Current (A)	0,5
Voltage (V)	220-240
Frequency (Hz)	50
Length of Electrical Supply Cord (cm)	200
Plug type	Schuko
Chimney height (mm)	0
Height of product, without chimney (mm)	0
Height of the product	770
Width of the product	860
Depth of the product	400
Minimum niche height	0
Minimum niche width	0
Niche depth	0
Net weight (kg)	22

## TECHNICAL FEATURES

Type of manual control devices	Touch control
Type of automatic control devices	-
Number of motors	1
Total power of the motors (W)	110
Number of speed settings: boost option availability	3
Boost presence	Ano
Maximum output air extraction (m <sup>3</sup> /h)	603
Boost position air extraction (m <sup>3</sup> /h)	603
Maximum output recirculating air (m <sup>3</sup> /h)	0
Boost position output recirculating (m <sup>3</sup> /h)	0
Light Control Type	-
Number of lights	0
Type of lamps used	N/A
Total power of the lamps (W)	0
Diameter of air outlet (mm)	0
No-return airflow flap	Ne
Grease filter material	Washable aluminium
Odour filter	Ne

## ENERGETICKÝ ŠTÍTEK

Sound power at min. speed (2010/30/EU)	54
Sound power at max. speed (2010/30/EU)	68
Noise level with boost position (dB(A) re 1 pW)	0